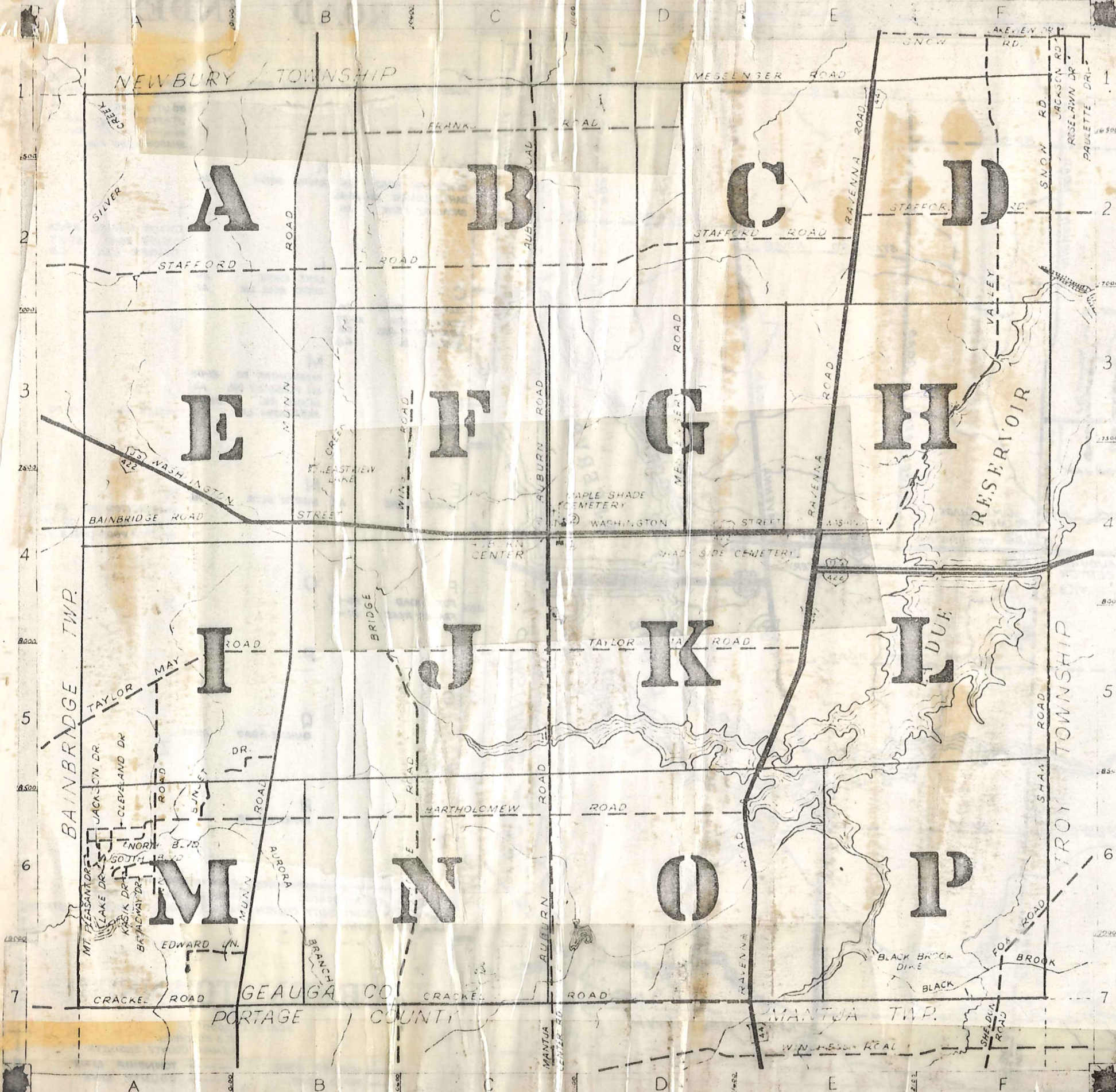


ROAD INDEX



1	A AUBURN ROAD	J C1-C1 JACKSON DRIVE	S A6 SHAW ROAD SNOW ROAD SOUTH BLVD. STAFFORD RD SUNSET DRIVE	F4-F6 F1-F2 A6 A2-E2 B5-A6
2	B BAINBRIDGE ROAD BARTHOLOMEW RD. BROADWAY DRIVE	K A4 KASIK DRIVE A6-06 A6	A6	T TAYLOR MAY RD. THORPE ROAD A5-E5 B5-B7
3	C CLEVELAND DRIVE CRACKLE ROAD	A6 A1-E7	A6	L LAKE DRIVE A6
4	D EDWARD LANE	A7 A6	A6	M MESSENGER RD. MT. PLEASANT DR. MUNN RD. E1-D4 A6 B1-B7
5	E FOX ROAD FRANKS ROAD	F6-F7 B1-D1	A6	N NORTH BLVD WASHINGTON ST. WING ROAD A3-E4 C3-C4
6	F QUINN ROAD	A5-A6	A6	O P Y Z
7	G RAVENNA RD	E1-E7	A6	X Y Z

- ① AUBURN ELEM SCHOOL
- ② AUBURN COMMUNITY CHURCH
- ③ AUBURN TOWN HALL
- ④ AUBURN VOL. FIRE DEPT.
- ⑤ STATE HIGHWAY GARAGE (SUB-STATION)

AUBURN TOWNSHIP

SCALE 1" = 2000'

UNPAVED ROAD
PAVED ROAD
TOWNSHIP LINE
COUNTY LINE

NEWBURY TOWNSHIP

BAINBRIDGE TOWNSHIP

10 A

Nick Russo Trac.
599-1025

577-762

J.T. Kubisa
S.T.A.

WHISPER WOOD CIRCLE

582-1033

Nick Russo, Taverre

SEC. 2

114.75 A

6

7.25 A

51.52 A

463-872

MEADIE T.Z

T R A C T O N E

3.48 A

565-1154

425-21

SEC. 1

110.42 A

J. Benedict

2

27.43 A

S. J. Zimanyi
485-826
485-886
485-888

G. H. Sperry et al
485-882

39.405 A

Metro-Mach. & Tool Co. Inc.

443-949

5

117 A.

74.50 A

2

578-101

R.G. TIMMONS

254-21

37.69 A

R.G. TIMMONS

7.25 A

23.32 A

R.G. TIMMONS

495-57

31.45 A

1

SEC. 3

243-555

58.50 A

G. A. R. TIMMONS
587-1109-1111

396-1

J. Zucker

5 A

5 A

5 A

5 A

5 A

5 A

M. Munn

20 A

345-449

SCALE 1" = 300'

44.42 A

F.H. Fugman

N

582-659

58.73 A

24.42 A

W. M. M...
P. Ho...
2-774
S.M. F...
576-576
2-774

J. L. S...
12-31-11
D.P. D...
587-451
SADIE S. YORK
29.0 A.

22 A.
S.M. F...
587-451

21 A.
S.M. F...
587-451

13 A.
S.M. F...
587-451

15.44 A
P.S. HORNE
227-577

3
S.M. BISCHAK

306-354
C.R. M...
285-487

13 A
E.P. KOWICKI

26 A

117 A.

4

309-661

3
Johnson
Plastics
Corp.
22,013 Ac.

126-786

51 A

4 AUBURN TWP.
JAN 1, 1970

126-786

4 AUBURN TWP.
JAN 1, 1970

126-786

4 AUBURN TWP.
JAN 1, 1970

126-786

4 AUBURN TWP.
JAN 1, 1970

126-786

4 AUBURN TWP.
JAN 1, 1970

126-786

4 AUBURN TWP.
JAN 1, 1970

126-786

4 AUBURN TWP.
JAN 1, 1970

126-786

4 AUBURN TWP.
JAN 1, 1970

126-786

4 AUBURN TWP.
JAN 1, 1970

126-786

4 AUBURN TWP.
JAN 1, 1970

126-786

4 AUBURN TWP.
JAN 1, 1970

126-786

4 AUBURN TWP.
JAN 1, 1970

126-786

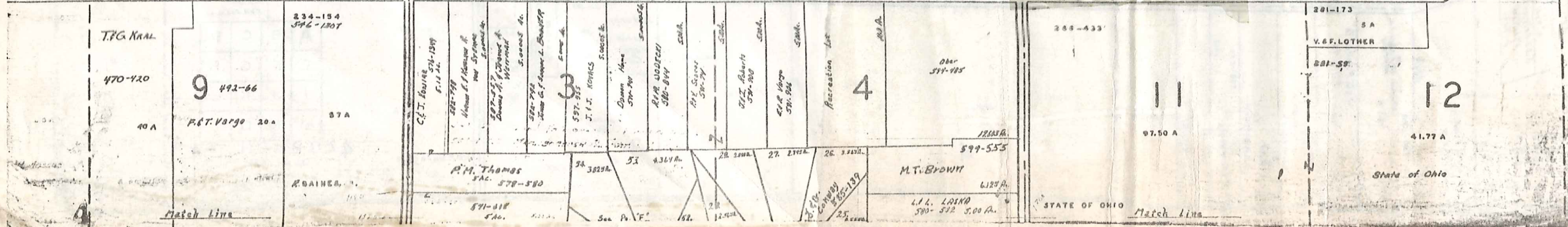
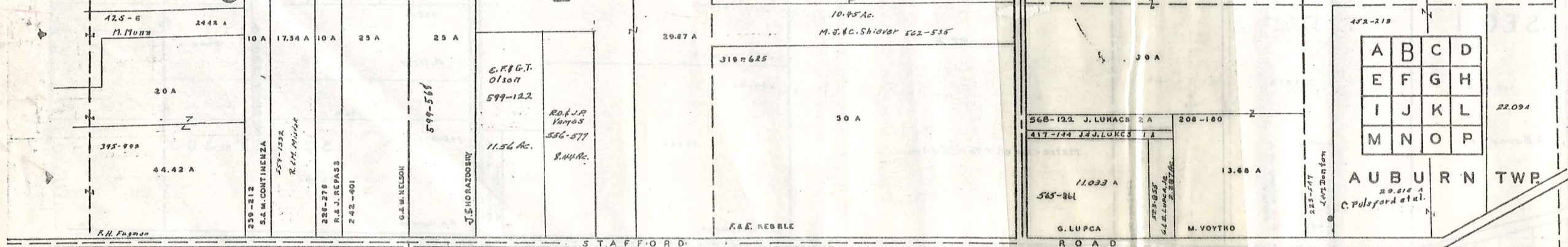
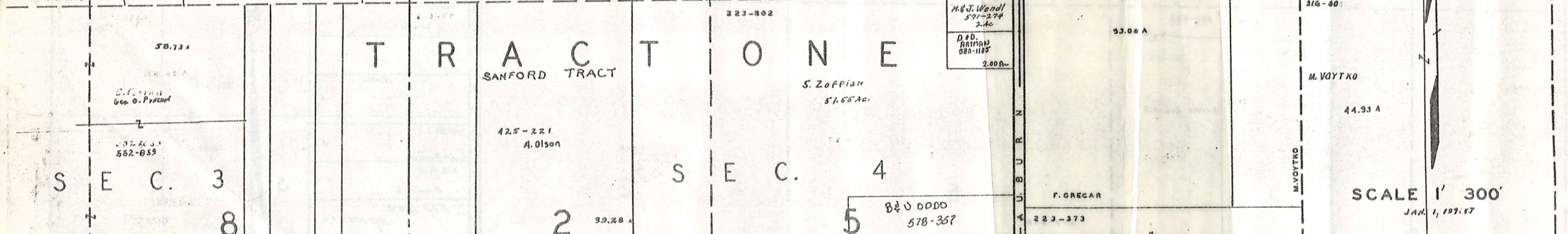
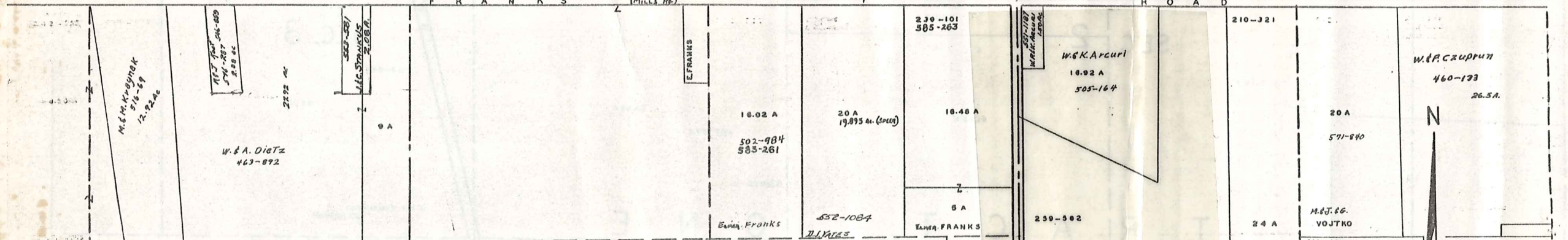
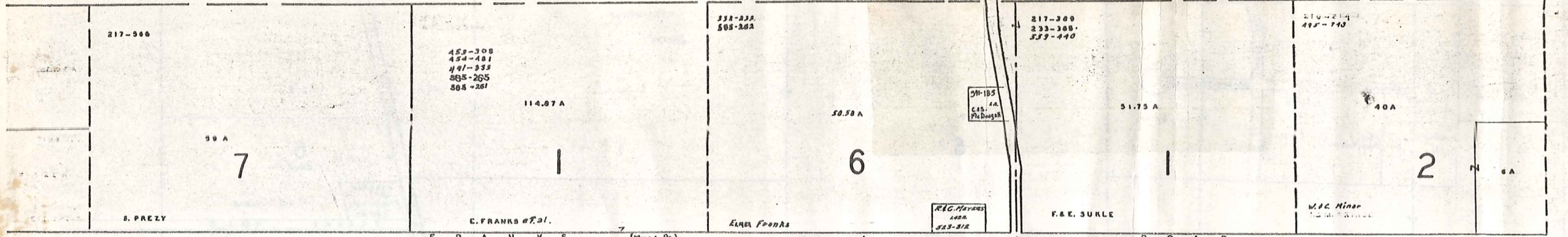
4 AUBURN TWP.
JAN 1, 1970

126-786

4 AUBURN TWP.
JAN 1, 1970

NEWBURY

TWP.



SCALE 1' 300'
JAN. 1, 1897

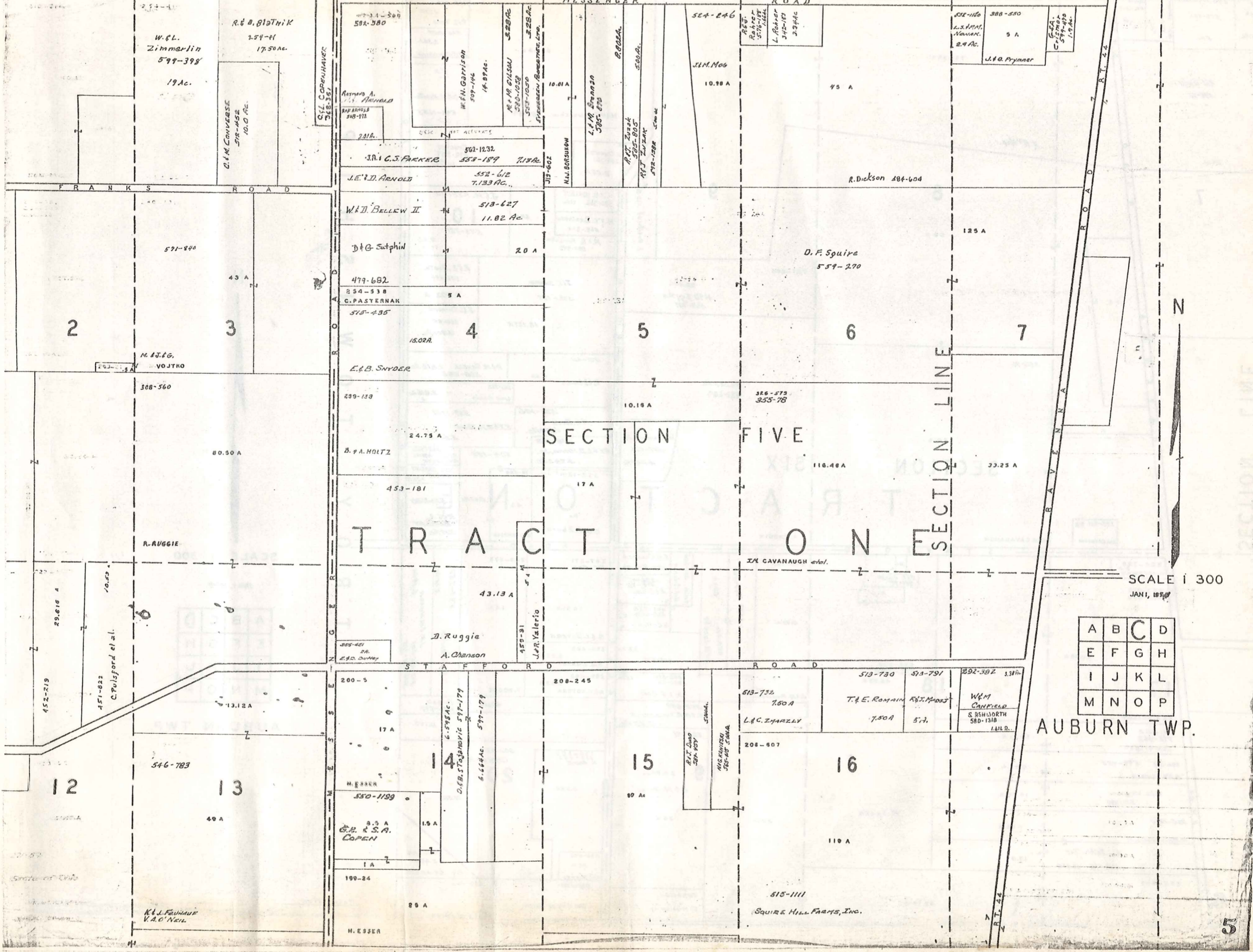
A	B	C	D
E	F	G	H
I	J	K	L
M	N	O	P

AUBURN TWP.

State of Ohio

Match line

NEWBURY TOWNSHIP



SECTION FIVE

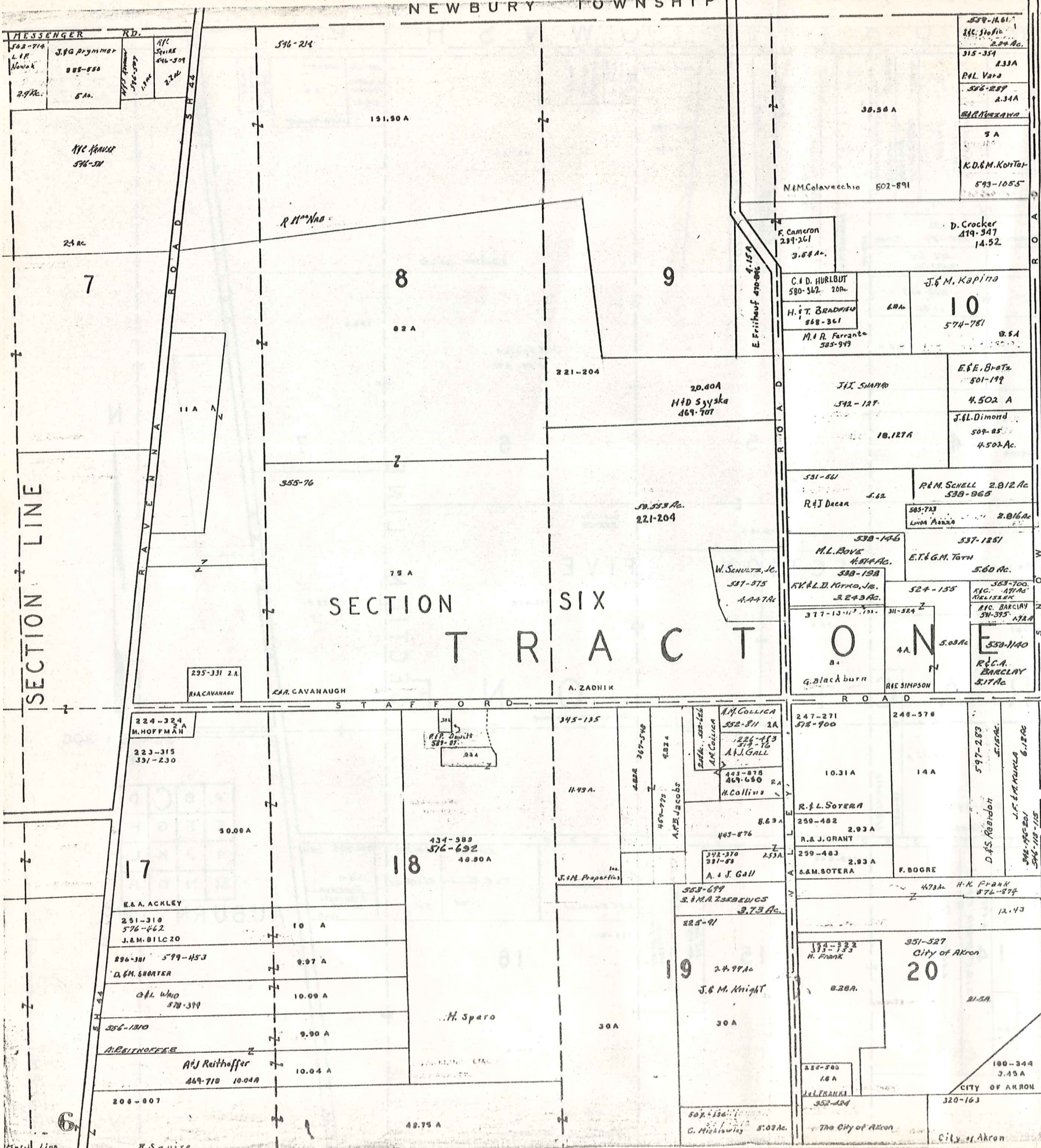
TRACT ON SECTION

SECTION LINE

SCALE 1/300
JANI, 1897

A	B	C	D
E	F	G	H
I	J	K	L
M	N	O	P

AUBURN TWP.



T R O Y T O W N S H I P



SCALE 1 300

JAN 1, 1979

A	B	C	D
E	F	G	H
I	J	K	L
M	N	O	P

AUBURN TWP.

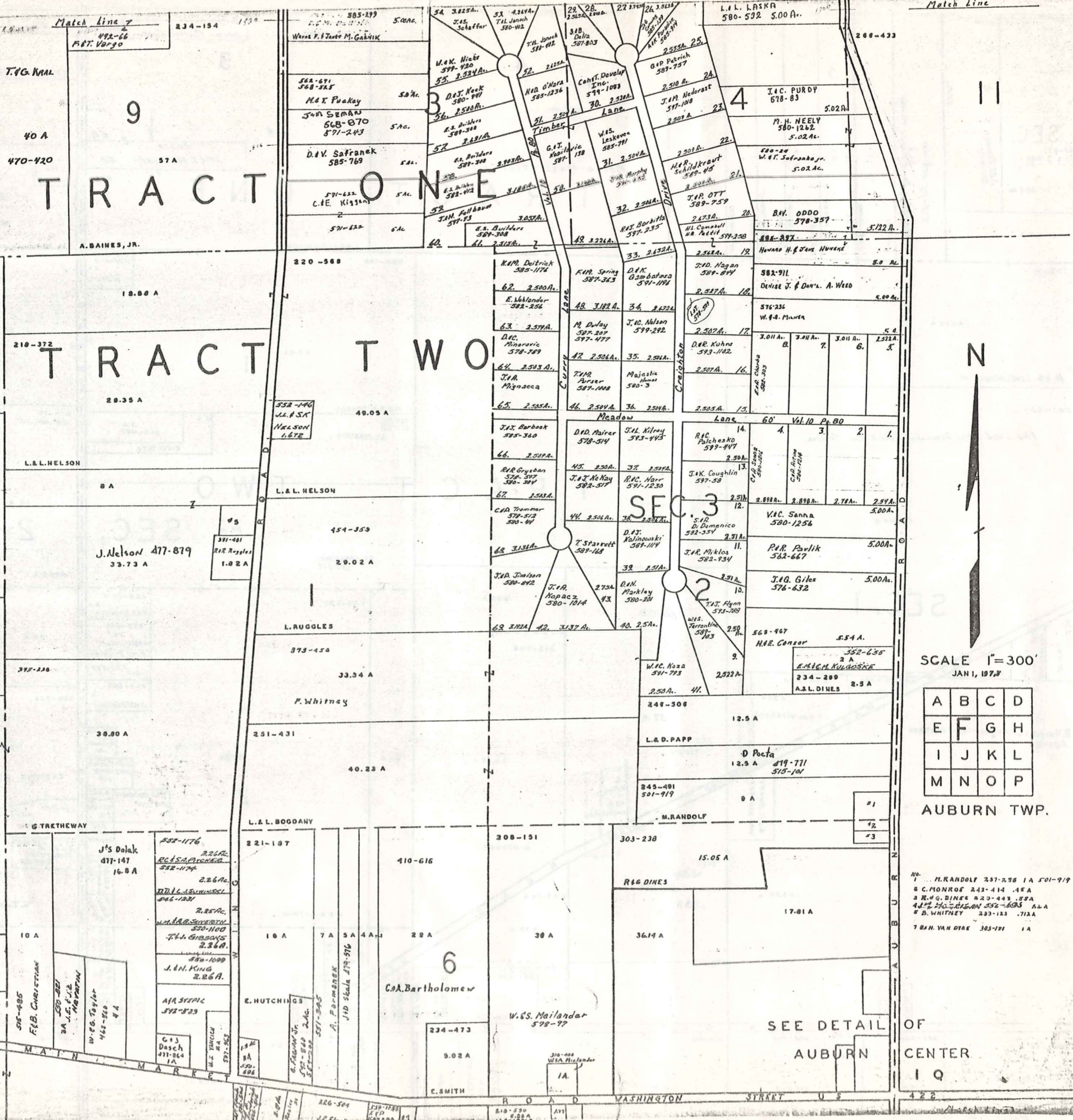
Match Line

TRACT ONE

TRACT TWO

SEC. 2

10



SCALE 1"=300'
JAN 1, 1978

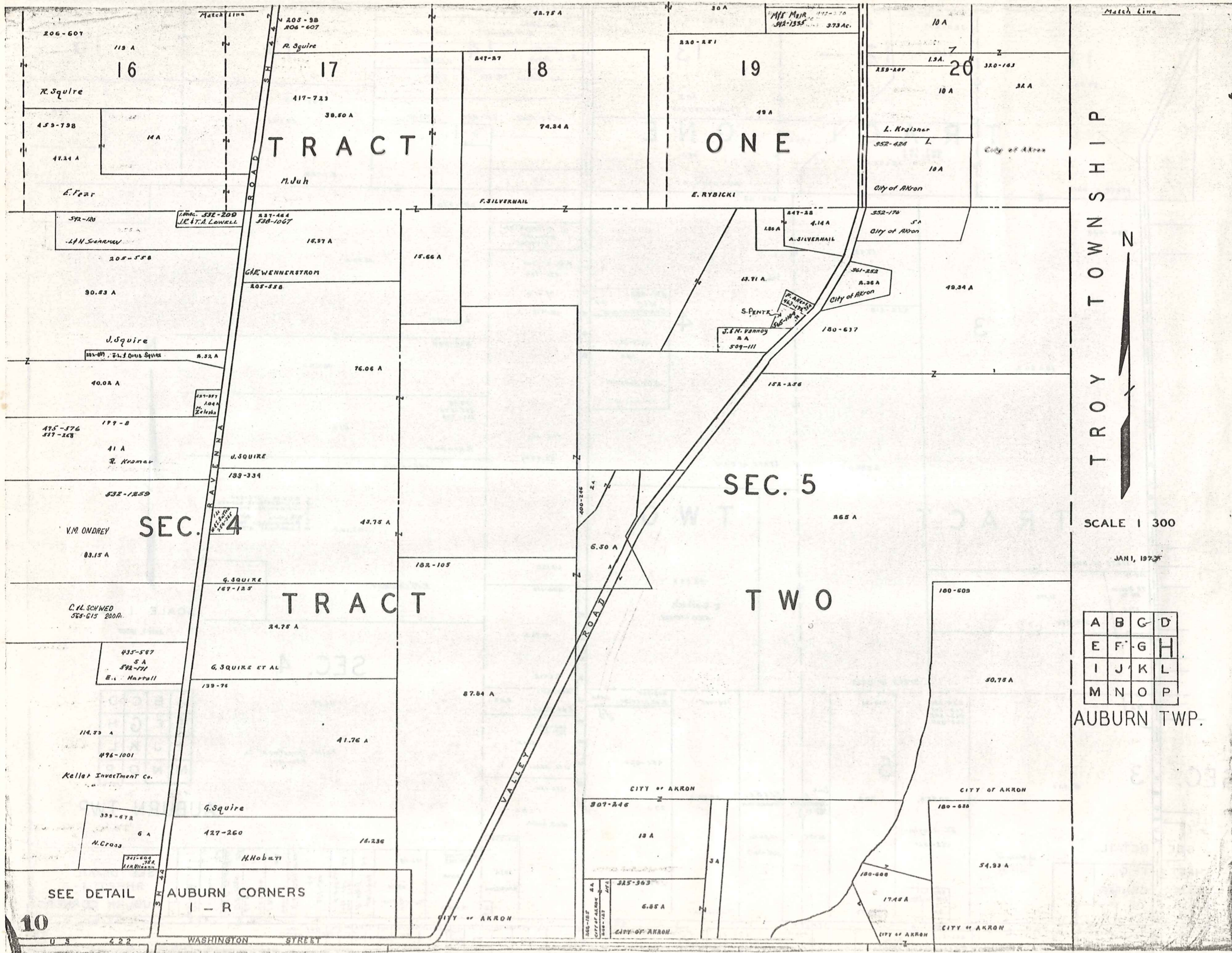
A	B	C	D
E	F	G	H
I	J	K	L
M	N	O	P

AUBURN TWP.

- 1 M. RANDOLF 237-238 1A 501-919
- 2 C. MONROE 243-414 4EA
- 3 W.G. DINES 220-443 5PA
- 4 J.L. NELSON 552-895 2AA
- 5 B. WHITNEY 233-123 712A
- 7 B.H. VAN DYKE 303-191 1A

SEE DETAIL OF
AUBURN
CENTER

19



TROY TOWNSHIP



SCALE 1 300

JAN 1, 1925

A	B	C	D
E	F	G	H
I	J	K	L
M	N	O	P

AUBURN TWP.

TRACT

ONE

TRACT

TWO

SEC. 5

SEC. 4

AUBURN CORNERS
I - R

SEE DETAIL

10

WASHINGTON STREET

VALLEY ROAD

CITY OF AKRON

CITY OF AKRON

CITY OF AKRON

CITY OF AKRON

CITY OF AKRON

CITY OF AKRON

CITY OF AKRON

CITY OF AKRON

CITY OF AKRON

CITY OF AKRON

CITY OF AKRON

CITY OF AKRON

CITY OF AKRON

CITY OF AKRON

CITY OF AKRON

CITY OF AKRON

CITY OF AKRON

CITY OF AKRON

CITY OF AKRON

CITY OF AKRON

CITY OF AKRON

CITY OF AKRON

CITY OF AKRON

CITY OF AKRON

CITY OF AKRON

CITY OF AKRON

CITY OF AKRON

CITY OF AKRON

CITY OF AKRON

CITY OF AKRON

CITY OF AKRON

CITY OF AKRON

CITY OF AKRON

CITY OF AKRON

CITY OF AKRON

CITY OF AKRON

CITY OF AKRON

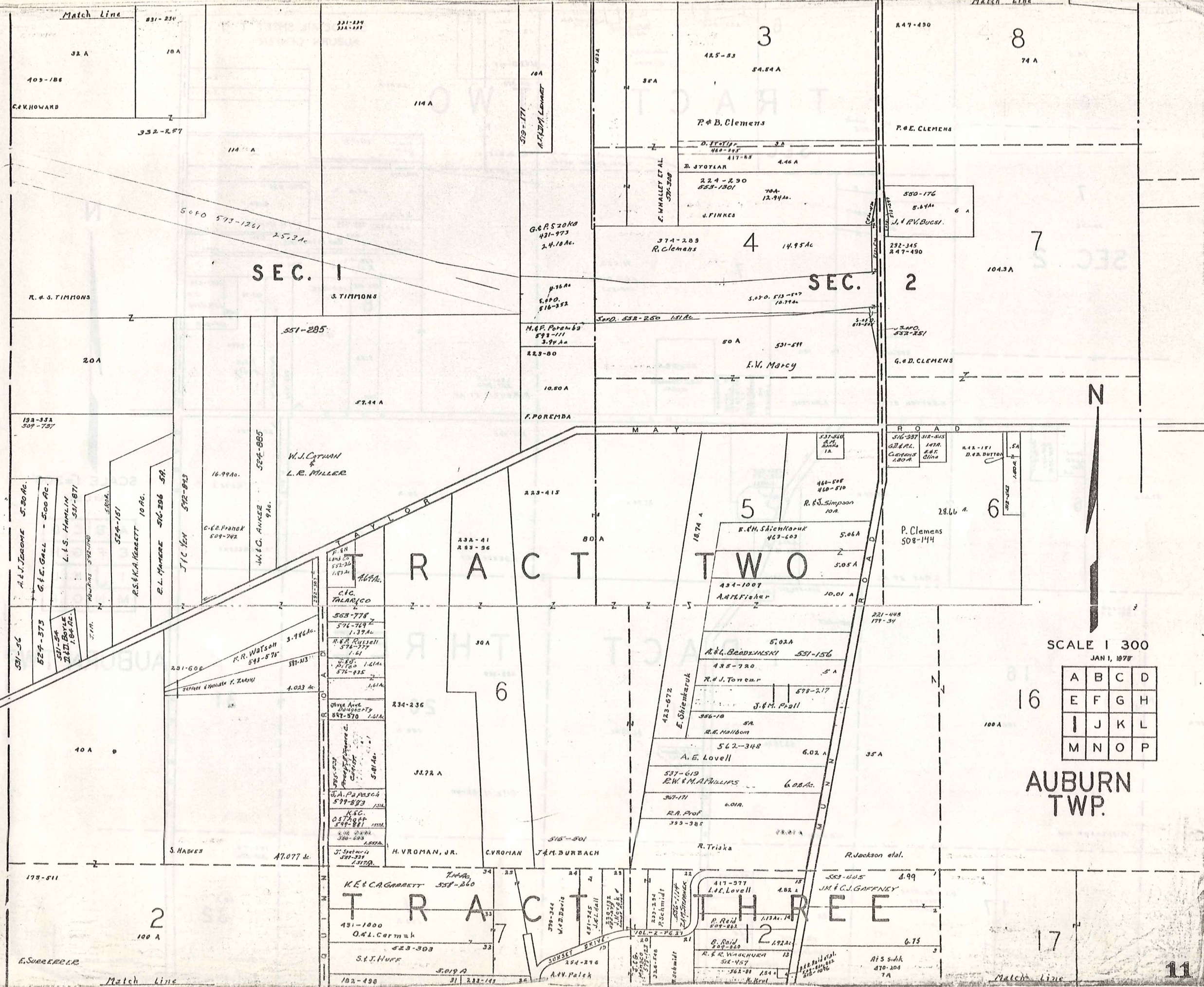
CITY OF AKRON

CITY OF AKRON

CITY OF AKRON

CITY OF AKRON

BAINBRIDGE TOWNSHIP



SEC. 1

SEC. 2

TRACT ONE

TRACT TWO

TRACT THREE

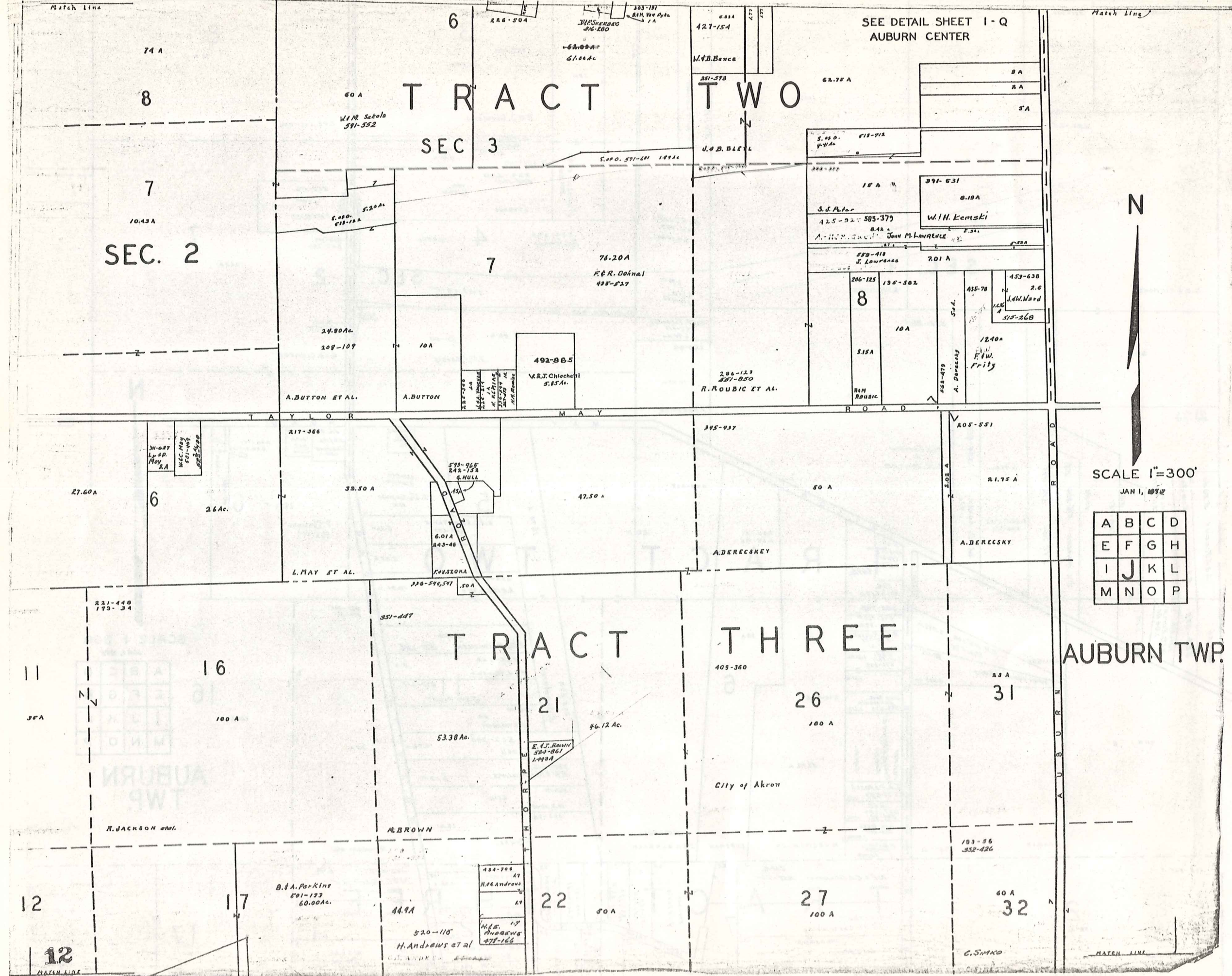
SCALE 1 300
JAN 1, 1978

A	B	C	D
E	F	G	H
I	J	K	L
M	N	O	P

AUBURN TWP.

17

11



SEE DETAIL SHEET I-Q
AUBURN CENTER

TRACT TWO

SEC 3

TRACT THREE

AUBURN TWP.



SCALE 1"=300'
JAN 1, 1892

A	B	C	D
E	F	G	H
I	J	K	L
M	N	O	P

SEC. 2

TRACT TWO

TRACT TWO

TRACT THREE

TRACT THREE

AUBURN TWP.

W.M. Scholz
591-552

61.00 Ac.

427-154

62.75 A

3 A
2 A
5 A

M.D. Bance

251-573

J. B. Blett

5.40 A
494 A

18 A

391-631

6.19 A

S. J. Fisher

425-920 585-379

W.H. Kemski

A. H. M. ...

John M. Lawrence

559-418

7.01 A

206-125

135-502

8

435-78

453-638

2.6

J.W. Ward

575-268

12.40 A

F.W. Frity

286-123
591-850
R. Roubic et al.

492-865
V.R.J. Chiochetti
5.85 Ac.

76.20 A
F. & R. Dohnal
498-527

24.80 Ac.
208-109

A. BUTTON ET AL.

A. BUTTON

446-510
446-511
446-512
446-513
446-514
446-515
446-516
446-517
446-518
446-519
446-520

217-366

27.60 A

6

26 A.

39.50 A

47.50 A

50 A

21.75 A

A. DERECSEKY

L. MAY ET AL.

593-965
242-152
G. HULL

6.01 A
843-48

336-546, 547
.50 A

A. DERECSEKY

345-437

205-551

TRACT THREE

TRACT THREE

AUBURN TWP.

16

21

26

31

53.30 Ac.

46.12 Ac.

100 A

E. J. Brown
584-861
1-990 A

City of Akron

H. JACKSON et al.

H. BROWN

B. A. Parkins
591-133
60.00 Ac.

44.9 A

22

27

32

434-706
H. C. Andrews

415-17
H. Andrews et al
478-166

520-118
H. Andrews et al

193-96
352-426

60 A

C. SIMKO

MATCH LINE

MATCH LINE

SEE AUBURN

DETAIL CENTER 1-Q

5

SEE DETAIL I-R AUBURN CORNERS

98.25A
87.07A
J. Wieland
S. ELWOOD
419-87

P. Dragomer
29.09A
8885-A

10A
R.R. Baker
820-308 3173A

D.J. Romig
463-287

9.29A
5.10A
532-710

R.M. Puckett
542-938 6.10A

R. Puckett
700A

M.S. McVay
25.87A

571-183
571-276

SEC. 3

9 TRACT

10 TRACT TWO

80.00 A
A. Campane
469-613

47.30 A

45.33 A

SEC. 4

d. Klima
417-533 5.06 A
F.B.L. ASCHENBRENER

S.B. Fortes

418-947

W.H. Brown

E. Watson

L.D. Howard

J.F.A. Rothoffer
574-1352

C.L. Paugh
881-82

H. Hofman
512-216
M. Hoch
518-1143

A.P. Hays
387-224

R.E. Whitaker
591-224
10A

537-628
24A

F.J. Masak & M.E. Himes

R.D. Goetsch
574-834
29.61 A

L.D. Howard
326-562
25.25A

6.59 A
L.F. Skala

J.P. KESNER
587-382
8.18

200-360
Acreage in default
R.H. Scalm

J.R. E. Shallice
581-873
6.5A

J.L.M. Colver
585-955
14.16A
H.W. Brown

82A

557-737
M.C. Fine

524-1
532-261

A.R. Koppa
460-958

342-225

36

84.53 A

360-19
368-380

M. Danku
362-628,630

76.91
41

26.42A
City of Akron

373-263

46

31
R.C. Kimmick
345-525 City of Akron

23.87 A

36

36

36

36

36

36

36

36

36

36

395-354
45.23 A
City of Akron

31

31

31

31

31

31

31

31

31

31

31

Q. Simko Match Line

32
37.31A

40A
M.S.J. Peter
362-1136 4AR.

32

32

32

32

32

32

32

32

32

SCALE 1" = 300'

JAN 1, 1979

A	B	C	D
E	F	G	H
I	J	K	L
M	N	O	P

AUBURN TWP.

13

SEE DETAIL I-R
AUBURN CORNERS

TRACT TWO

CITY OF AKRON

CITY OF AKRON

SEC. 5

93.94 Ac.

CITY OF AKRON

CITY OF AKRON

TRACT

TRACT THREE

51

56

61

52

57

62

T R O Y T O W N S H I P



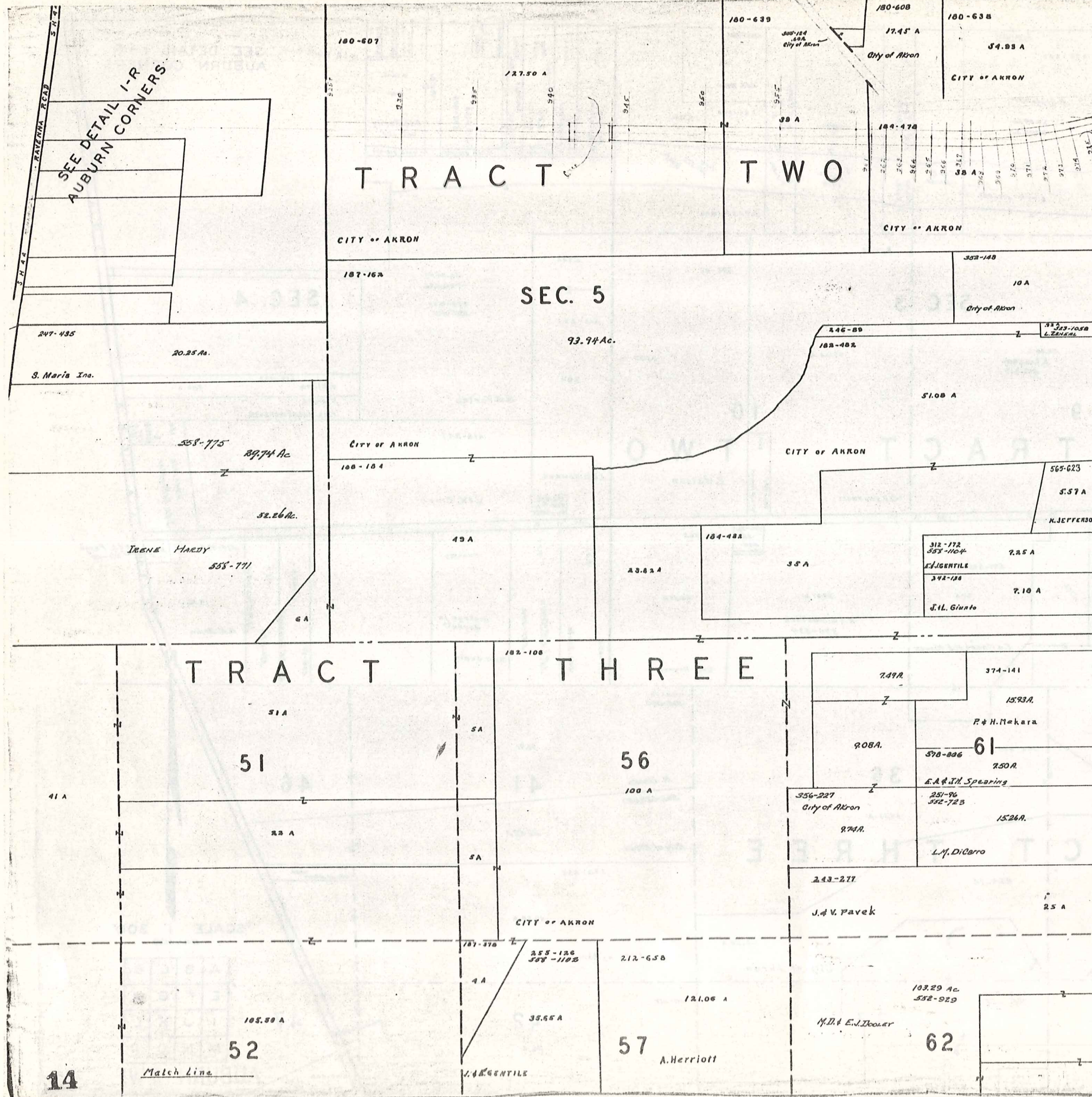
SCALE 1" 300'
JAN 1, 1978

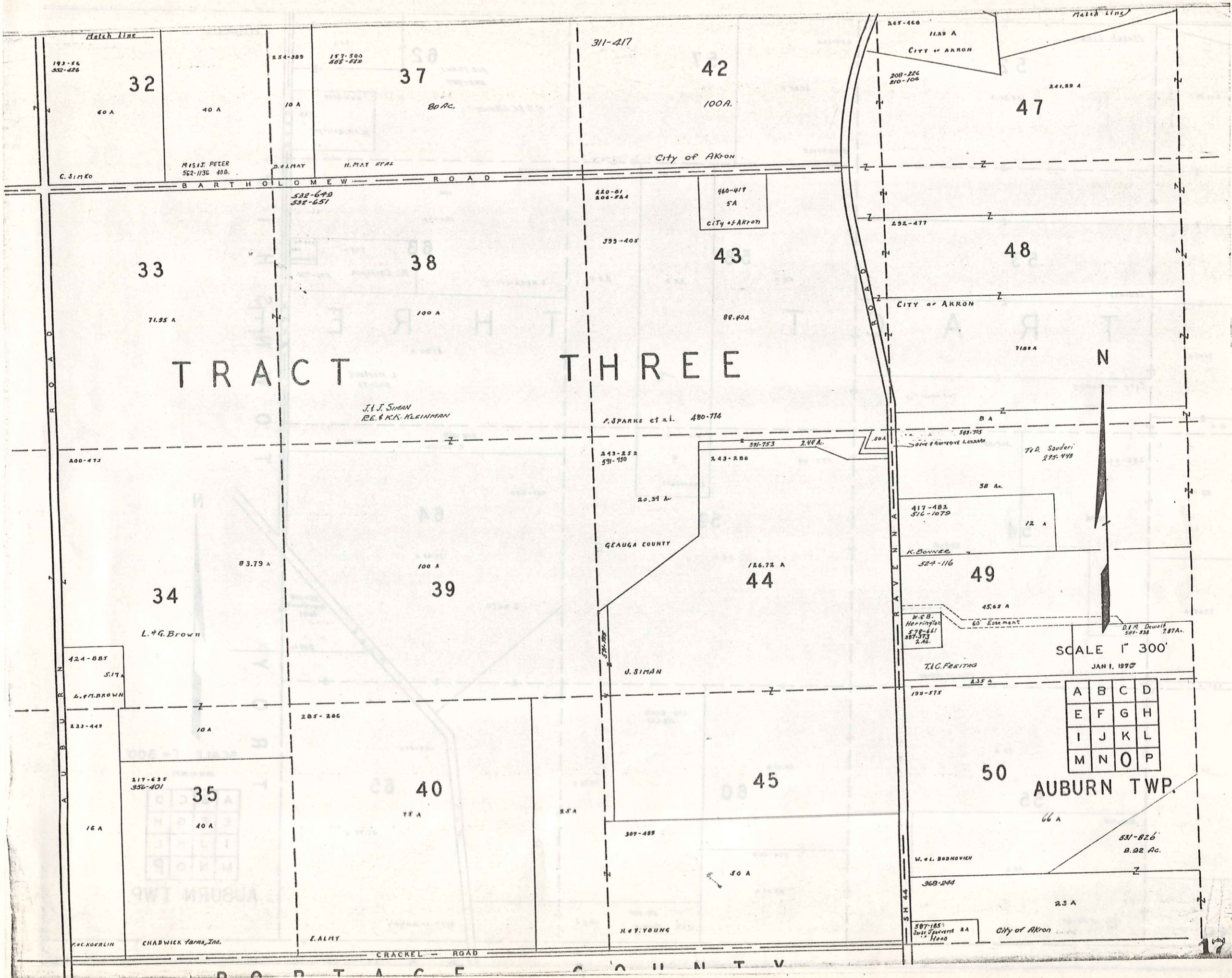
A	B	C	D
E	F	G	H
I	J	K	L
M	N	O	P

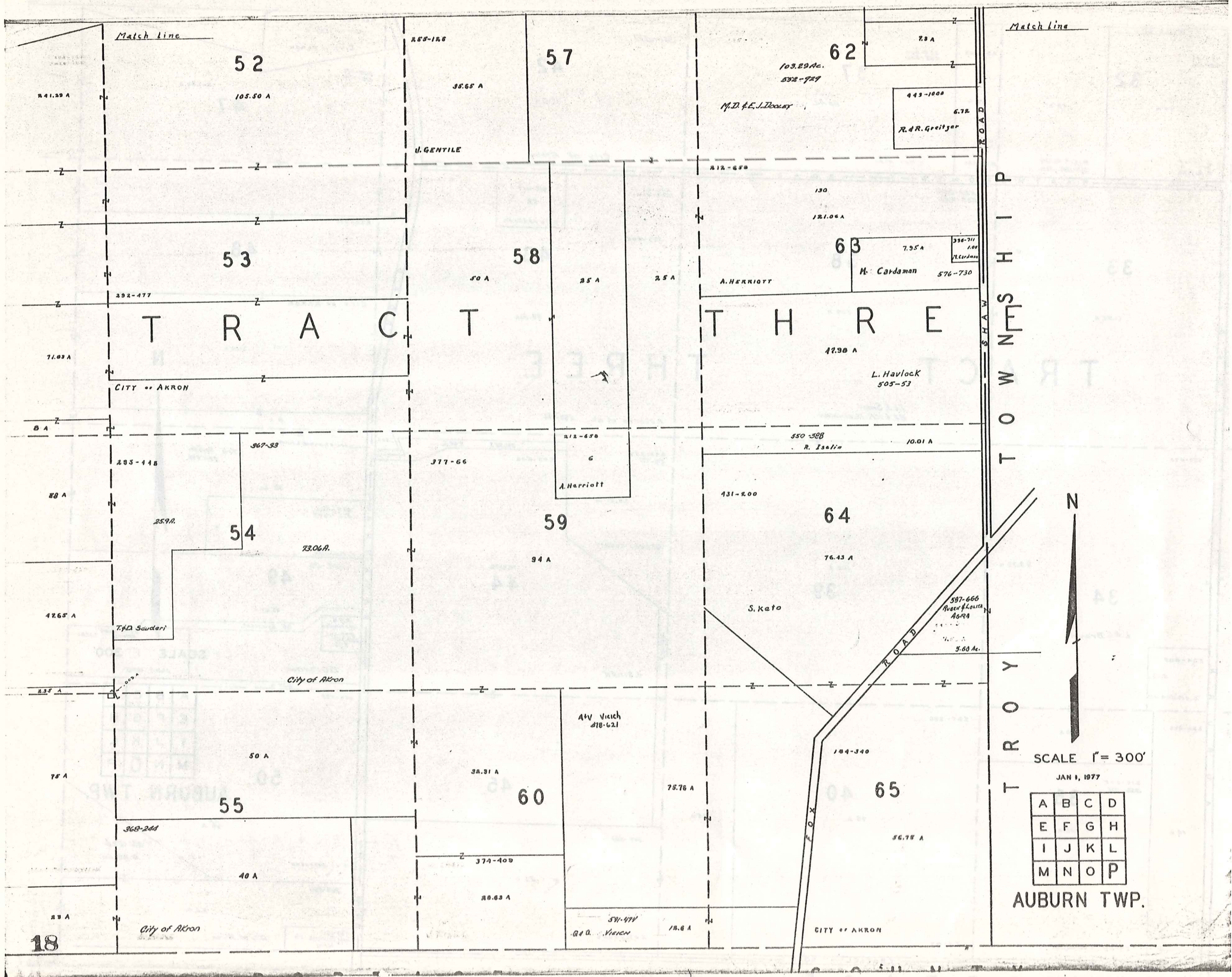
AUBURN TWP.

Match Line

Match Line







Match line

Match line

T R A C T

T H R E

T O W N S H I P

T R O Y



SCALE 1" = 300'

JAN 1, 1977

A	B	C	D
E	F	G	H
I	J	K	L
M	N	O	P

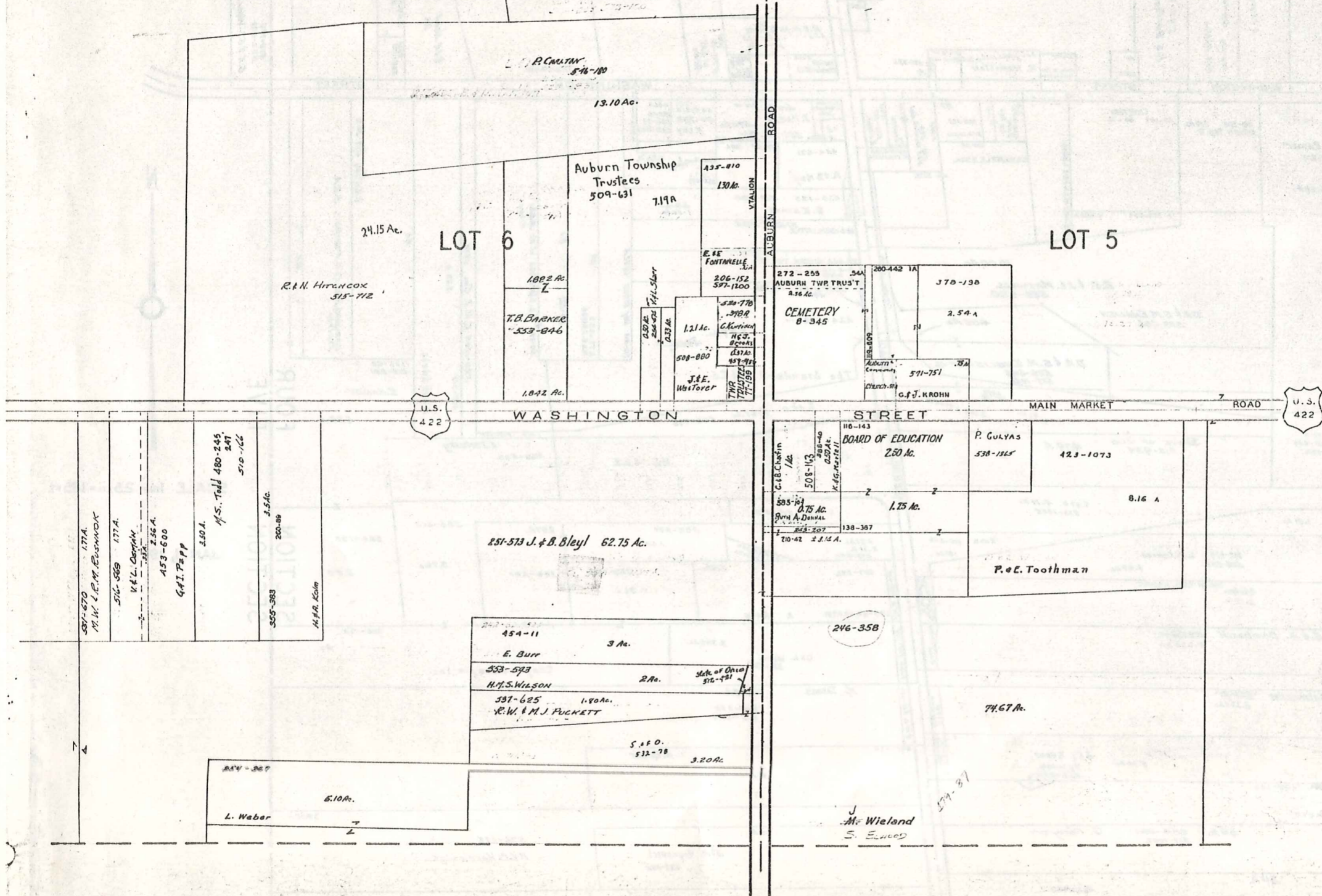
AUBURN TWP.

AUBURN TP.

[CENTER]

TRACT 2 SECTION 3

E. & W. Richardson
4.11 Ac. 574-563



SCALE 1 in. = 2.5 ch. = 165 FT.

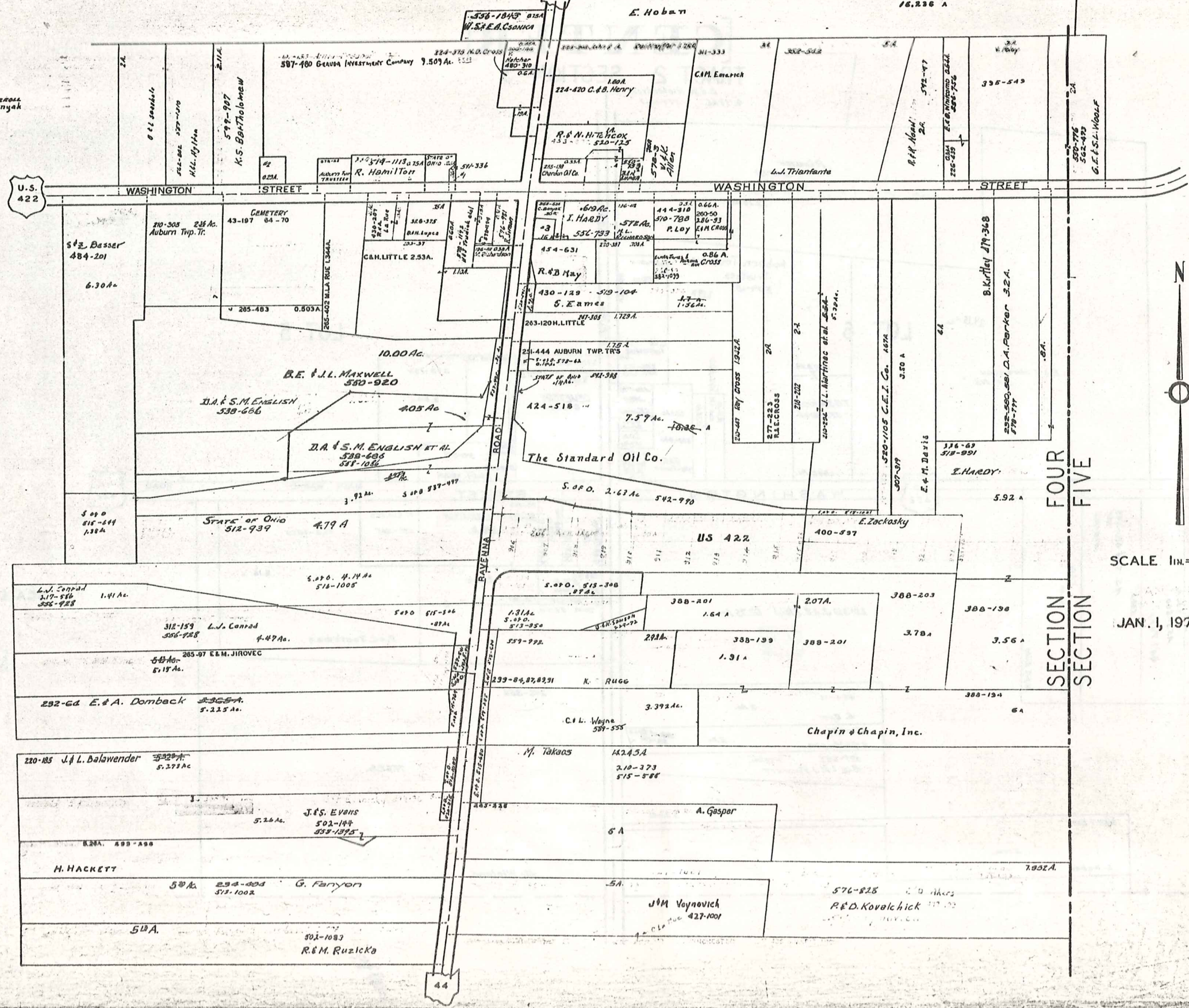
JAN 1, 1923

TRACT 2
SECTION 4

AUBURN TP. 127-260

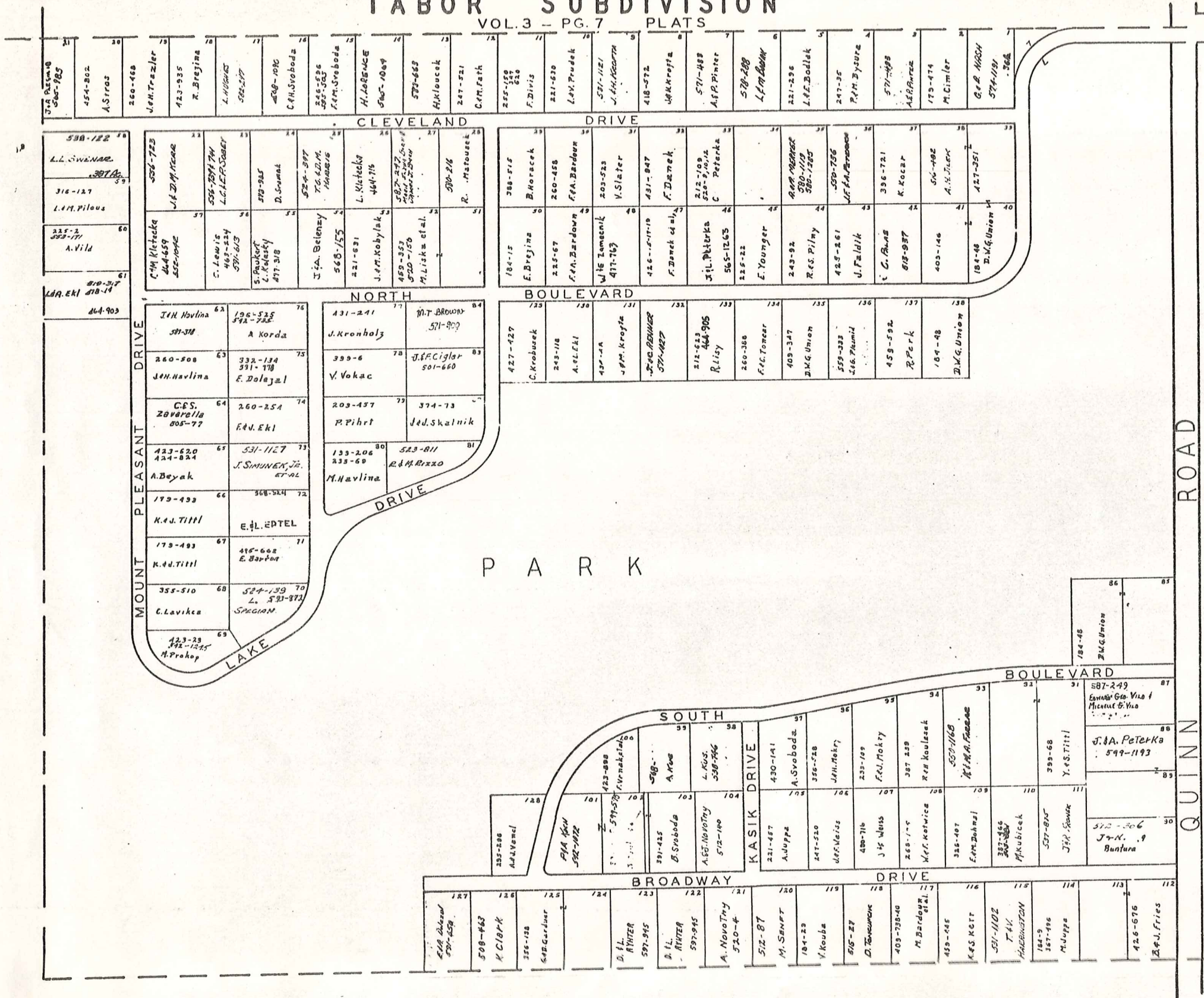
AUBURN CORNERS
& VICINITY

11. 510-78 T.M. Carroll
12. 510-78 T.M. Carroll
13. 513-83 C.H. Benyak



TABOR SUBDIVISION

VOL. 3 - PG. 7 PLATS

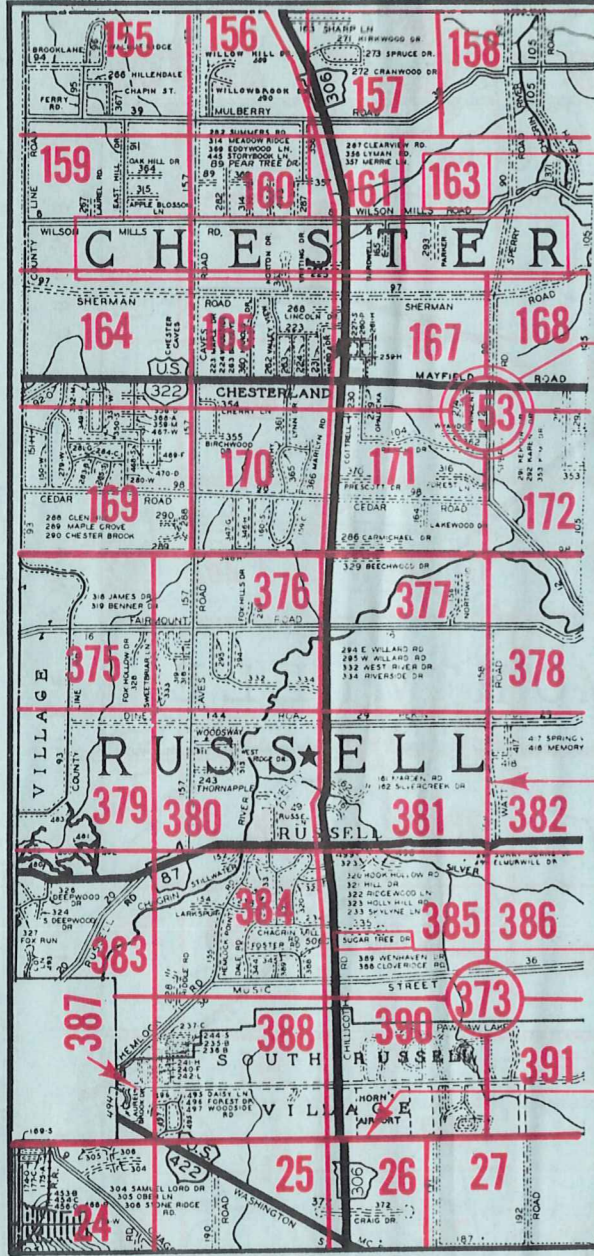


SCALE 1" = 100'
JAN. 1977

AUBURN TWP.

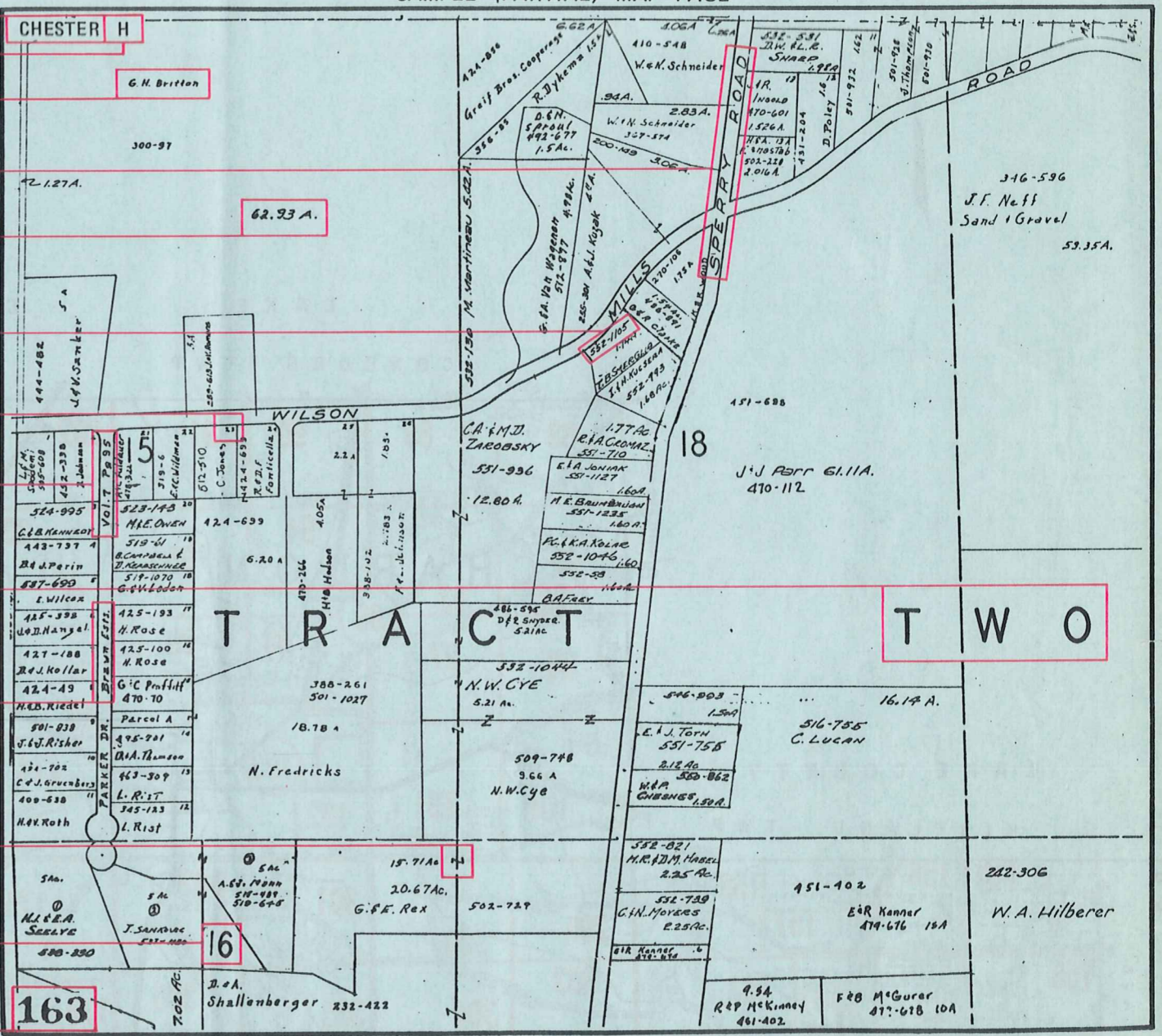
Explanation and Use Sheet for Geauga County, Ohio

SAMPLE (PARTIAL) COUNTY INDEX MAP



- Township Name
- Map Page Number (Or Letter)
- Owners Name
- Street Name
- Acreage
- Municipality Index Beginning Atlas Page Number
- Deed Book & Page
- Subdivision Lot Number
- Plat Book & Page
- Tract Number
- Atlas Page Boundary
- Subdivision Name
- Street Name
- Denotes Continuous Ownership
- Municipality Index Atlas Page Boundary
- Tract Lot Number
- Atlas Page Number

SAMPLE (PARTIAL) MAP PAGE



USE OF THE MAP VOLUME

1. LOCATE THE GENERAL AREA OF INTEREST ON THE COUNTY INDEX MAP, ATLAS PAGE 'B'.
2. **A. IF PROPERTY IS IN A TOWNSHIP**, NOTE THE ATLAS PAGE NUMBER. TURN TO THE PAGE INDICATED AND LOCATE SPECIFIC PARCEL OF INTEREST.
NOTE: ON SOME MAPS YOU MAY BE REFERRED TO A DETAIL SHEET SHOWING AN ENLARGEMENT OF THE AREA. THESE MAPS ARE FOUND AT THE END OF THE REGULAR MAP PAGES IN EACH TOWNSHIP EITHER IN ALPHABETICAL OR NUMERICAL SEQUENCE.
- B. IF PROPERTY IS IN A MUNICIPALITY**, REFER TO THE TABLE OF CONTENTS, ATLAS PAGE 'C', AND NOTE THE BEGINNING ATLAS PAGE NUMBER FOR THE MUNICIPALITY OF INTEREST.
 - (1) TURN TO THE PAGE INDICATED. ON THIS PAGE WILL APPEAR AN INDEX MAP FOR THAT MUNICIPALITY.
 - (2) LOCATE SPECIFIC AREA OF INTEREST AND NOTE THE MAP PAGE NUMBER.
NOTE: DO NOT CONFUSE THE MAP PAGE NUMBER WITH THE ATLAS PAGE NUMBER IN THESE MUNICIPALITIES.
 - (3) FOLLOW EITHER ALPHABETICAL OR NUMERICAL SEQUENCE TO THE MAP PAGE INDICATED AND LOCATE SPECIFIC PARCEL OF INTEREST.